

Features Comparison

PC Sync Software

Features	PC Sync Free Edition	PC Sync Pro Edition
 SMART 2D BUBBLE®		
DWL-2000XY		✓
DWL-3000XY		✓
DWL-3500XY		✓
 Single-Axis Angle Meter		
DWL-2000XY		✓
DWL-3000XY	✓	✓
DWL-3500XY	✓	✓
 Dual-Axis Angle Meter		
DWL-2000XY		✓
DWL-3000XY	✓	✓
DWL-3500XY	✓	✓
 Single-Axis Angle Graph		
DWL-2000XY		✓
DWL-3000XY	✓	✓
DWL-3500XY	✓	✓
 Dual-Axis Angle Graph		
DWL-2000XY		
DWL-3000XY		✓
DWL-3500XY		✓
 Vibrometer Graph		
DWL-2000XY		
DWL-3000XY		✓
DWL-3500XY		✓
 USB Connectivity		
DWL-2000XY		✓
DWL-3000XY	✓	✓
DWL-3500XY	✓	✓
 Bluetooth Connectivity		
DWL-2000XY		
DWL-3000XY		✓
DWL-3500XY		✓

Note: free edition is not available for DWL-2000XY

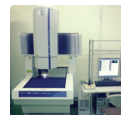
Applications :



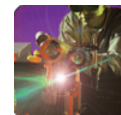
Biomedical & Pharmaceutical



CNC Machine Alignment



CMM Levelling (Metrology)



Research Laboratory



Semiconductor Production Machines



Aerospace & Defence



Railway & Transportation System

Authorised Distributor:




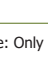
www.digipas.com



Scan QR code or visit
www.digipas.com

© 2017 DIGIPAS TECHNOLOGIES INC. All Rights Reserved.

Mobile Sync Apps

Features	Mobile Sync Free Edition	Mobile Sync Pro Edition
 SMART 2D BUBBLE®		
DWL-3000XY		✓
DWL-3500XY		✓
 Single-Axis Angle Meter		
DWL-3000XY	✓	✓
DWL-3500XY	✓	✓
 Dual-Axis Angle Meter		
DWL-3000XY		✓
DWL-3500XY		✓
 Bluetooth Connectivity		
DWL-3000XY	✓	✓
DWL-3500XY	✓	✓

Note: Only Bluetooth connectivity available for Mobile Sync Apps

PC System Requirements

User's PC is recommended the following items to be installed for using the PC Sync Software:

- Microsoft framework 3.5 for 32bit Windows OS or
- Microsoft framework 4.0 for 64bit Windows OS
- Windows XP service pack 3 / Windows Vista / Windows 7 / Windows 8

The following item are required:

- At least 1 GB Ram
- At least 100MB free disk space on hard drive
- Microsoft Excel 2007 and above
- USB 2.0 Port
- Bluetooth adapter (For Bluetooth Connection)

PC Sync Software & Android Apps



Bluetooth

USB
UNIVERSAL SERIAL BUS

For 2-Axis Precision Digital Level

Available on the App Store

GET IT ON Google Play

Software Icon



Digi-Pas® PC Sync Software & Android Apps enable wireless Bluetooth/USB connectivity and empower machine installers to perform 2-axis simultaneous levelling, alignment tasks and vibration measurements with speed and precision that conventional single-axis level is unable to match.

Innovation & Technology Driven™



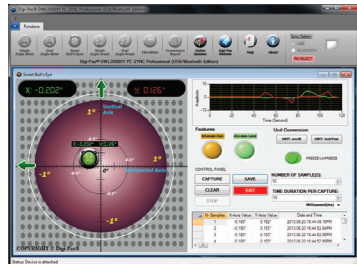
Professional PC Sync Software

Digi-Pas® Professional PC Sync is a 'plug & play' user-friendly interface software (embedded with National Instrument software) that supports remote real-time measurement, user-definable data acquisition & logging features through wireless Bluetooth/USB cable with Digi-Pas® 2-Axis Precision Digital Machinist® Levels. It serves as an effective solution for continuous reading of levelling, angle measurement & vibration status of precision machines and equipment.

PC Sync Software Features

SMART 2D BUBBLE®

This unique feature enables user to view and record 2-axis angle/levelling measurement simultaneously in graphical bull's eye (with auto range feature) and numeric formats. The Smart 2D Bubble® clearly indicates the elevation point of a plane surface enables user to perform 2D alignment activities efficiently.

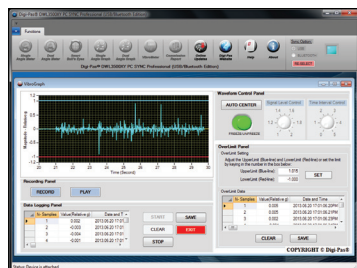


Single-Axis & Dual-Axis Angle Graphs

Single-axis or dual-axis angle/levelling measurement is presented in line graph and numerical readings which enables user to monitor and record machine's levelling status changes over a period of time. Data captured can be saved in Excel file for further analysis.

VibroMeter Graph

VibroMeter provides numeric and graphical display of vibration magnitude and pattern/graph that serves as an effective assessment for vibration condition on precision machines/instruments and their surrounding floor. User can easily record and analyze vibration profiles to improve production yield and reduce scraps in precision CNC manufacturing & metrology applications.

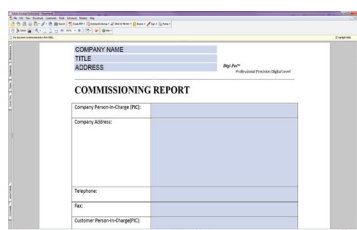


Single-Axis & Dual-Axis Angle Meters

Real-time single-axis or dual-axis angle/levelling measurement is displayed graphically and numerically in degree, mm/M & In/Ft. units concurrently on PC monitor.

Commissioning Report

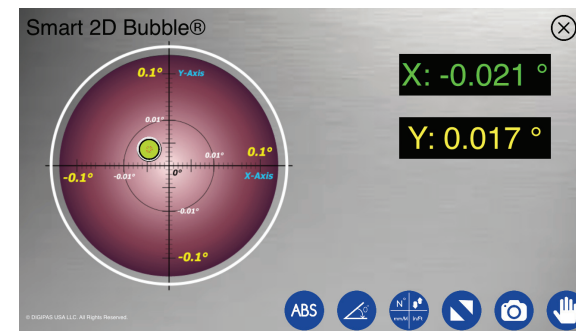
Machine levelling and vibration characteristics can be recorded and stored in PC in the form of Commissioning Report files. This is particularly useful for accountability and historical records on each machine/equipment installation, setup and preventive maintenance requirements.



Professional Mobile Sync Apps

The user-friendly Digi-Pas® Level Mobile Sync Apps can be easily installed in smartphone or tablet to fully utilize the remote wireless Bluetooth mobile connectivity to the Digi-Pas® 2-axis precision digital levelling devices, providing amazing user experience of 'one-man-operation' for machine installers to perform remote 2-axis simultaneous levelling & alignment task conveniently and speedily.

Android® & iOS Apps Features



Smart 2D Bubble®, view on smartphone or tablet screen using mobile sync apps

SMART 2D BUBBLE®

This feature enables user to view 2-axis angle/levelling measurement simultaneously in graphical bull's eye (with auto range feature) and numeric formats in degree, mm/M & In/Ft. units.

Quality and productive works can be achieved by completely eliminating the hassles of levelling one-axis-at-a-time (trial-and-error) experienced when using conventional single-axis levels.

Single-Axis & Dual-Axis Angle Meters

This feature enables user to view single-axis or dual-axis angle/levelling measurement in numerical and graphical display i.e. degree, mm/M & In/Ft. units.



Single & Dual-Axis Angle Meter, view on smartphone or tablet screen using Digi-Pas® Level Mobile Sync Apps

Supported OS Versions

- Android 2.2 Froyo and above
- iOS 8.0 and above

Note: Please check for latest version at www.digipas.com



Scan the QR code to download the apps